

Area:		Date:	
Unit:		Comments:	

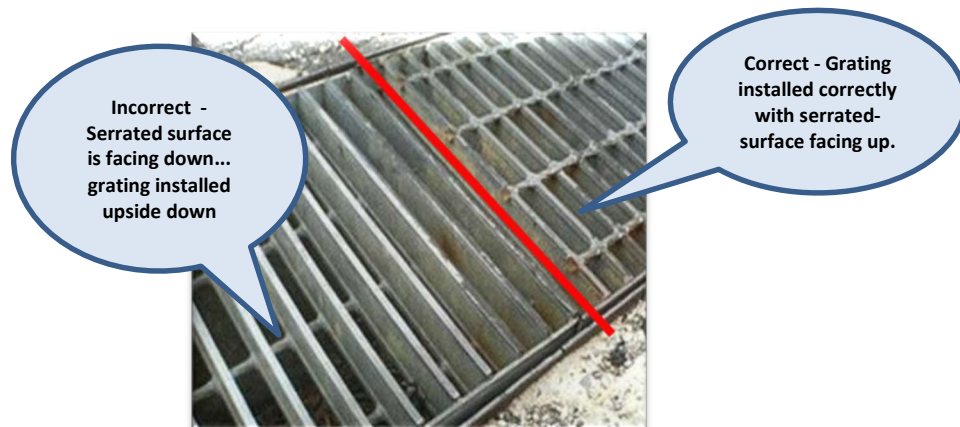
Checklist Inspection Guidance

The load bearing edges are generally the long ends of the grating where the bearing ends of the bearing bars sit on the support steel or concrete.

Check for signs of excessive corrosion and physical damage to the grating, supports and grating clips

Grating - General Conditions		Yes	No	Corrective Actions
1	Is the grating missing?			If yes, hard barricade area immediately, notify supervisor and enter a Safety Work Order
2	Is the grating bent, bowed, not level, or flexes (greater than 1/4") when walked on?			If yes, hard barricade area immediately, notify supervisor and enter a Safety Work Order
3	Is the grating supported on load bearing edges with at least 1" of overlap onto the supports?			If no, hard barricade area immediately, notify supervisor and enter a Safety Work Order
4	Is the grating installed with the serrated-surface facing up?			If no, hard barricade area immediately, notify supervisor and enter a Safety Work Order
5	For penetrations in the grating is a toe-board installed?			If no, hard barricade area immediately, notify supervisor and enter a Safety Work Order
6	Is grating and support system corroded to a point where the integrity of the grating is compromised?			If yes, hard barricade area immediately, notify supervisor and enter a Safety Work Order
7	Is the grating size and/or configuration such that the grating will not fall between the supports?			If no, hard barricade area immediately, notify supervisor and enter a Safety Work Order
Grating - Secured Down with Clips		Yes	No	Corrective Actions
8	Are at least 2 "tie down" clips installed on each support (e.g., 6-8 clips per grating section)?			If no, hard barricade area immediately, notify supervisor and enter a Safety Work Order
9	Are grating clips tightened and secured in place?			If no, hard barricade area immediately, notify supervisor and enter a Safety Work Order
Grating - Welded in Place		Yes	No	Corrective Actions
10	Is the grating welded at a minimum of two places per support?			If no, hard barricade area immediately, notify supervisor and enter a Safety Work Order

EXAMPLES



ATTENTION: Printed copies should be used with caution.

The user of this document must ensure the current approved version of the document is being used.

Incorrect - Less than 1" of grating on the support. No clips or welds.

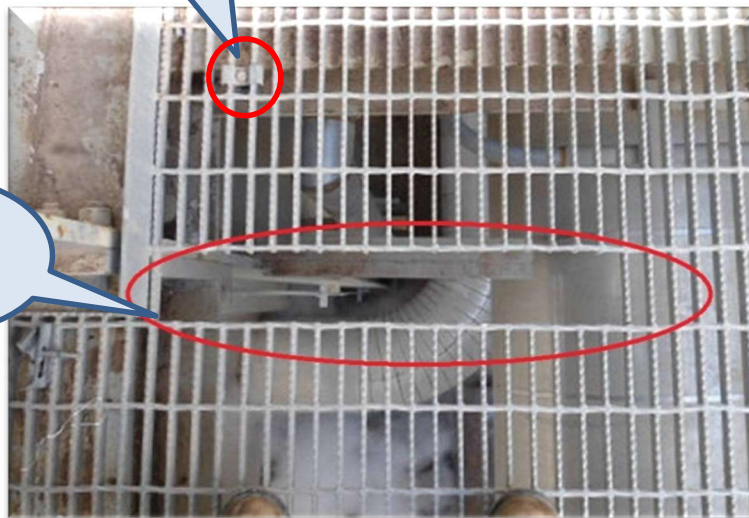


Correct - Grating clips secured to the support on both sides.



Incorrect - Single grating clip on support

Incorrect - Hole in grating



Project Maintenance Coordinator: Approved / Denied _____ Date: _____

Area Operator: Approved / Denied _____ Date: _____

Contractor Rep.: Approved / Denied _____ Date: _____

ATTENTION: Printed copies should be used with caution.

The user of this document must ensure the current approved version of the document is being used.